



Deluxe Wall Mounted
Ironing Board

Installation Instructions

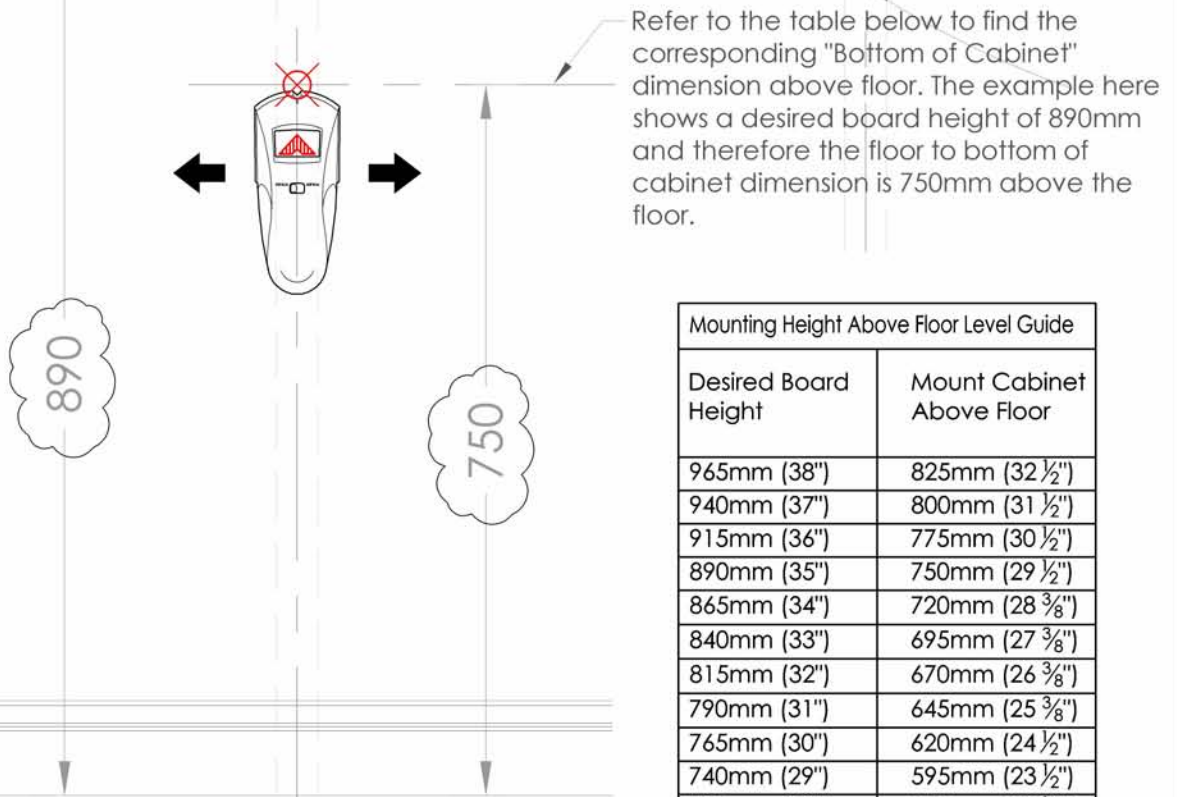
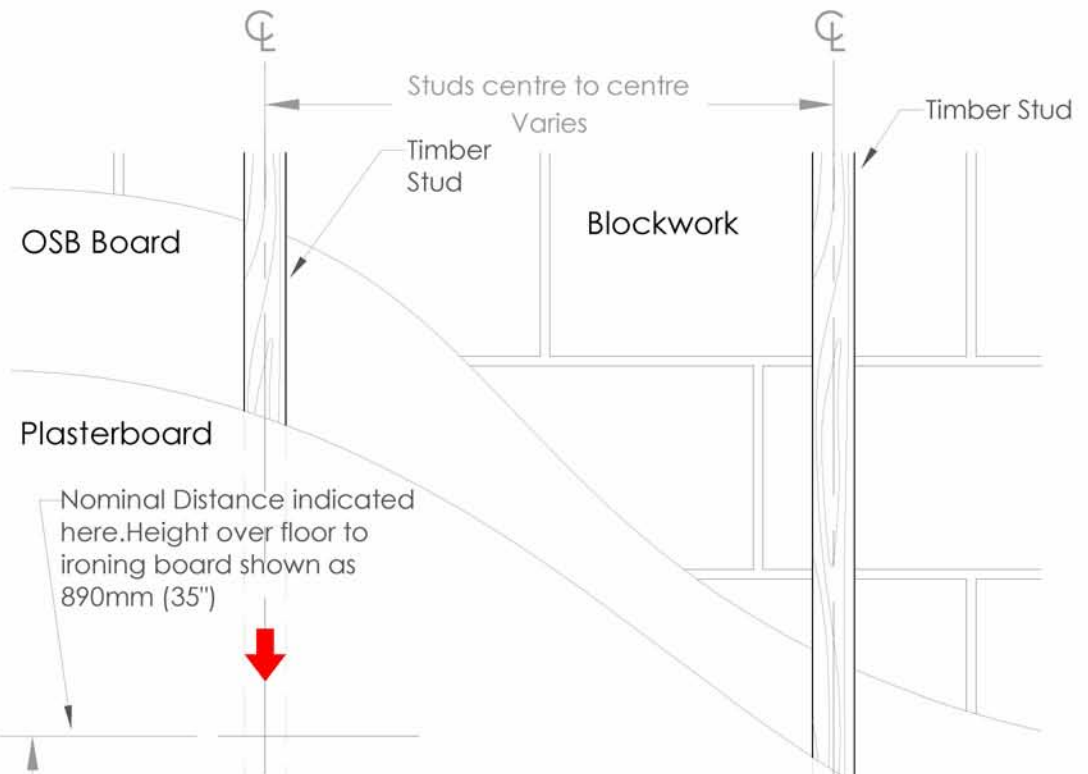
Timber Frame Installation

1. The Deluxe Wall Mounted Ironing Board should be installed at a height that suits you and where it is easy to access. Always check the location selected for hidden services in walls or fixing backgrounds.
2. Determine the desired Ironing Board height above floor according to personal preference - ****Note:** The average height of an Ironing Board is 890mm (35") from the floor.

3. Ensure you have sufficient space at the selected location to open the board into the In-Service position. The board measures 1070mm (42") long by 310mm (12 1/4") wide.

4. Ensure you have sufficient room to the side of the cabinet, approximately 400mm, to allow the door to open to a position where it is flush/parallel to the wall surface.

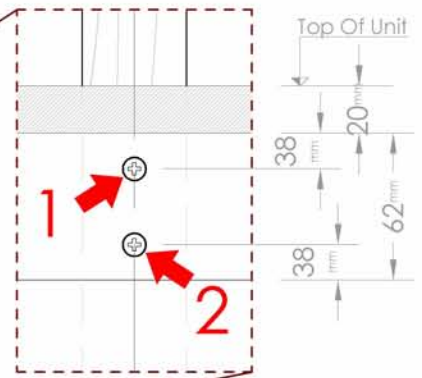
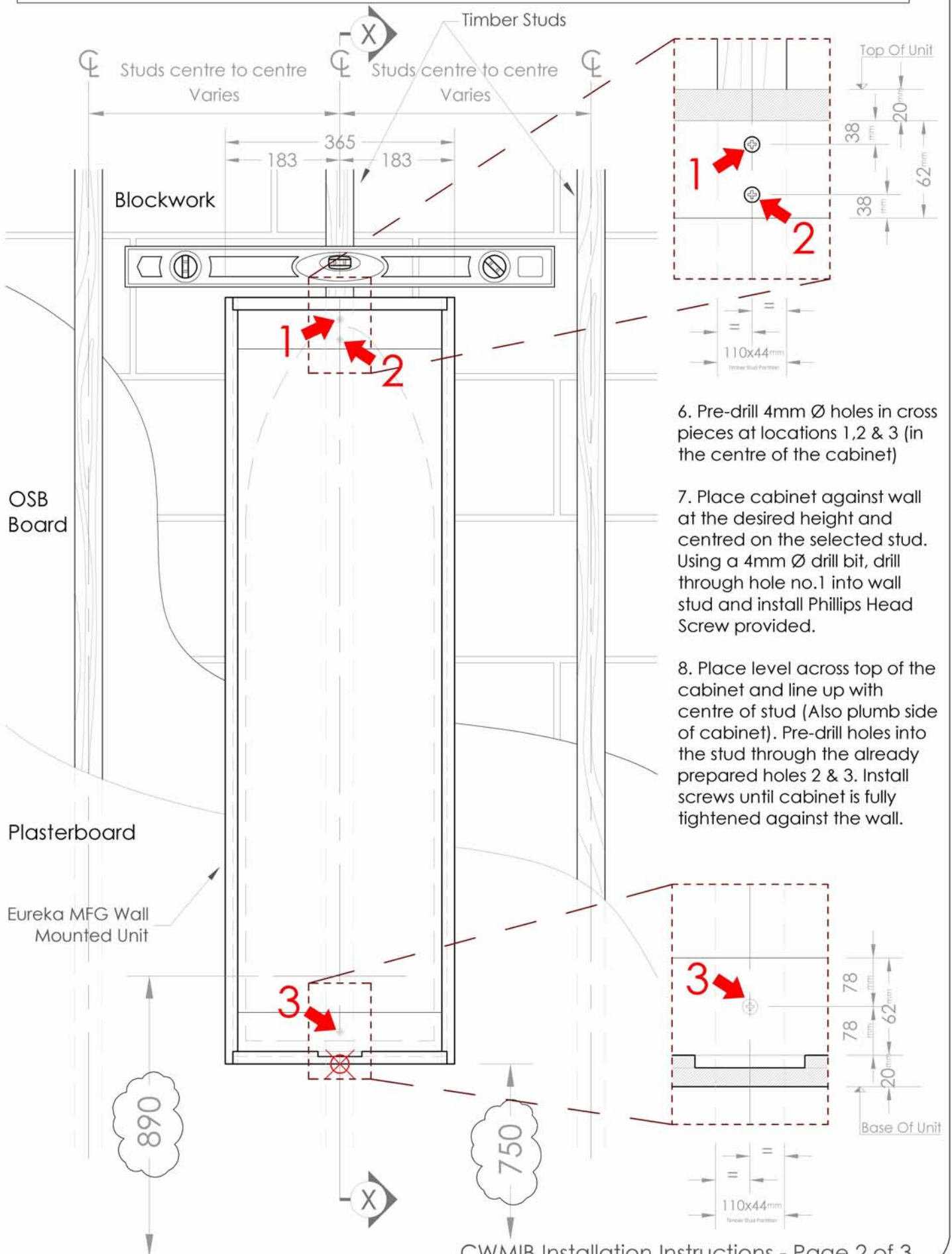
5. Locate the wall stud at the selected location using a stud finder. Mark the bottom of cabinet position, making reference to the Mounting Height chart shown on the right.



Desired Board Height	Mount Cabinet Above Floor
965mm (38")	825mm (32 1/2")
940mm (37")	800mm (31 1/2")
915mm (36")	775mm (30 1/2")
890mm (35")	750mm (29 1/2")
865mm (34")	720mm (28 3/8")
840mm (33")	695mm (27 3/8")
815mm (32")	670mm (26 3/8")
790mm (31")	645mm (25 3/8")
765mm (30")	620mm (24 1/2")
740mm (29")	595mm (23 1/2")
715mm (28")	570mm (22 1/2")

******IMPORTANT NOTE****:** Always check for the presence of hidden services before fixing to walls or backgrounds

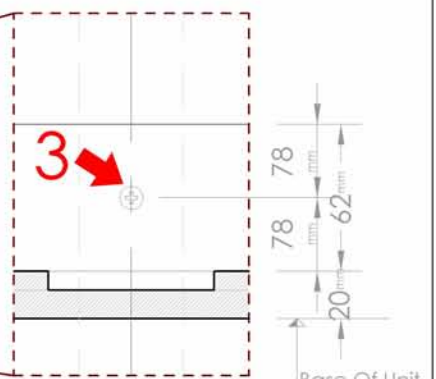
Timber Frame Installation



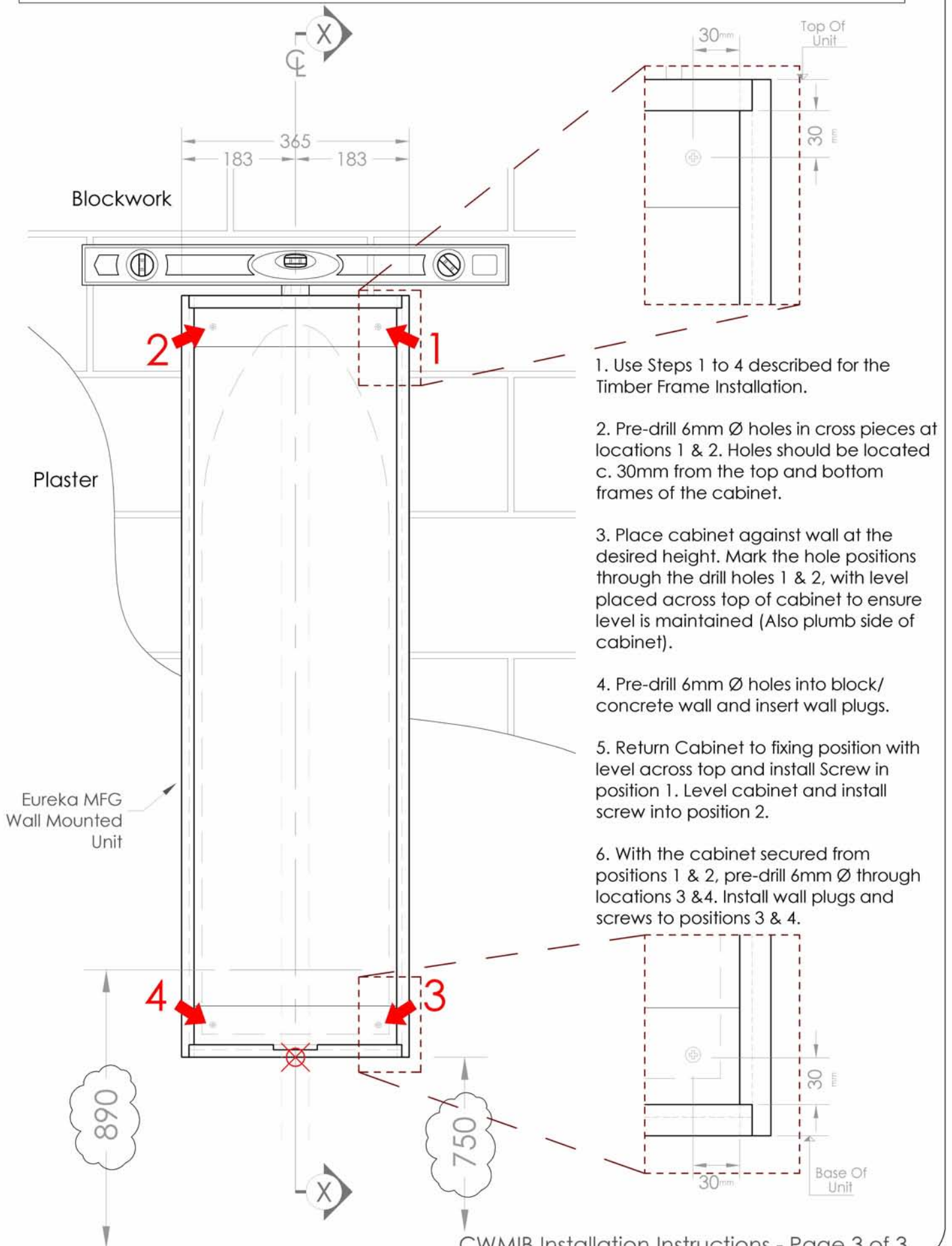
6. Pre-drill 4mm Ø holes in cross pieces at locations 1, 2 & 3 (in the centre of the cabinet)

7. Place cabinet against wall at the desired height and centred on the selected stud. Using a 4mm Ø drill bit, drill through hole no.1 into wall stud and install Phillips Head Screw provided.

8. Place level across top of the cabinet and line up with centre of stud (Also plumb side of cabinet). Pre-drill holes into the stud through the already prepared holes 2 & 3. Install screws until cabinet is fully tightened against the wall.



Blockwall/Concrete Wall Installation



1. Use Steps 1 to 4 described for the Timber Frame Installation.
2. Pre-drill 6mm Ø holes in cross pieces at locations 1 & 2. Holes should be located c. 30mm from the top and bottom frames of the cabinet.
3. Place cabinet against wall at the desired height. Mark the hole positions through the drill holes 1 & 2, with level placed across top of cabinet to ensure level is maintained (Also plumb side of cabinet).
4. Pre-drill 6mm Ø holes into block/concrete wall and insert wall plugs.
5. Return Cabinet to fixing position with level across top and install Screw in position 1. Level cabinet and install screw into position 2.
6. With the cabinet secured from positions 1 & 2, pre-drill 6mm Ø through locations 3 & 4. Install wall plugs and screws to positions 3 & 4.